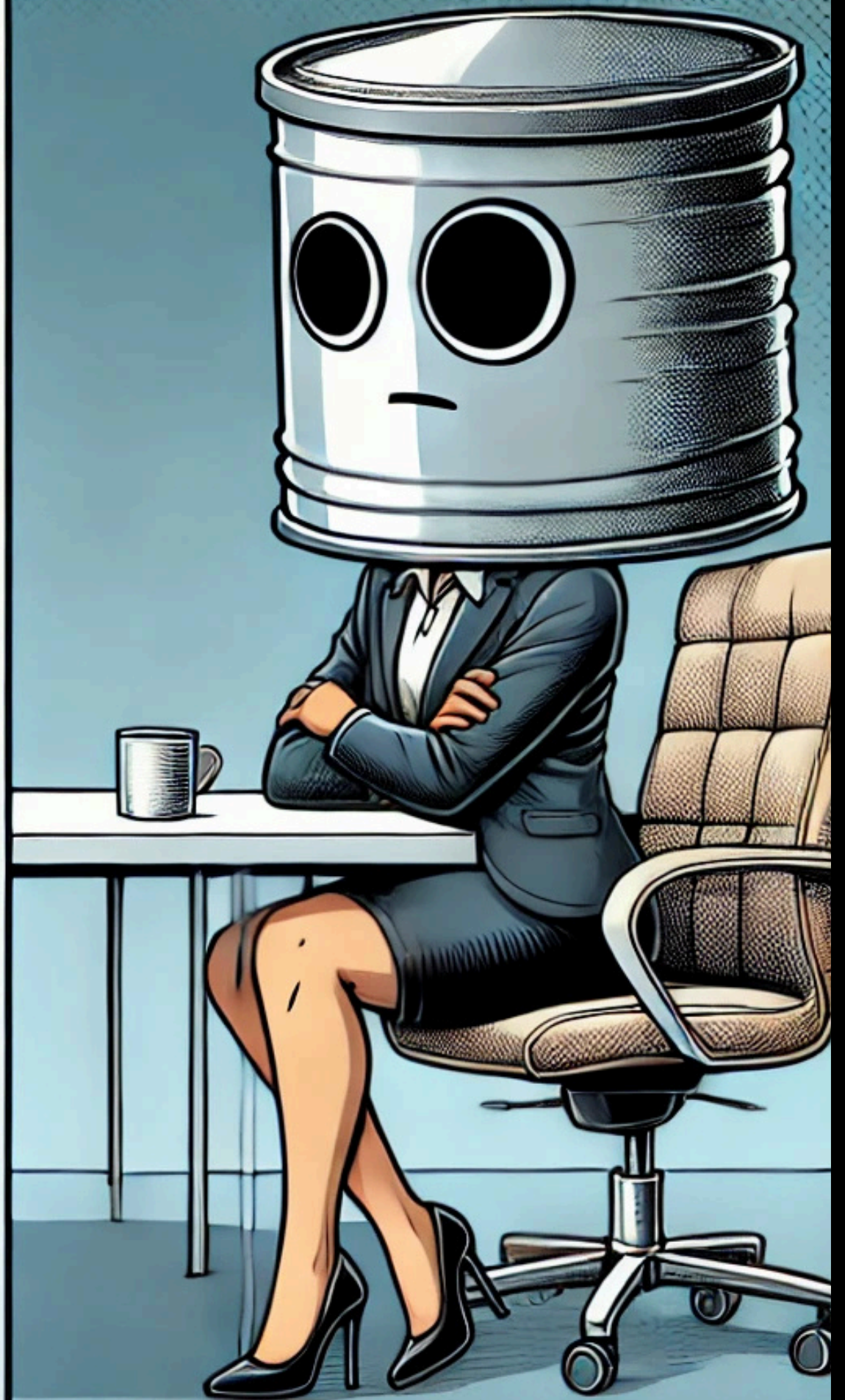
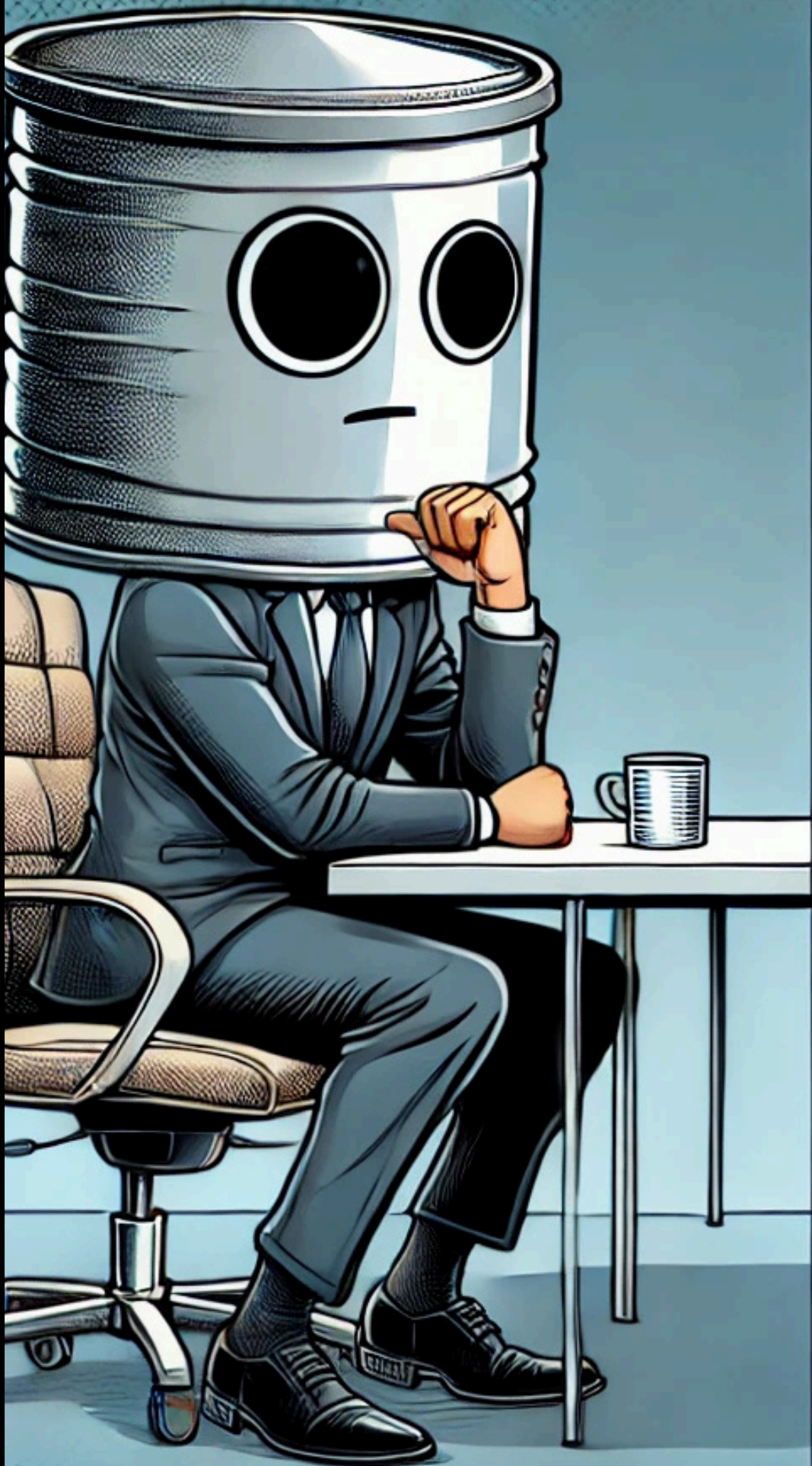
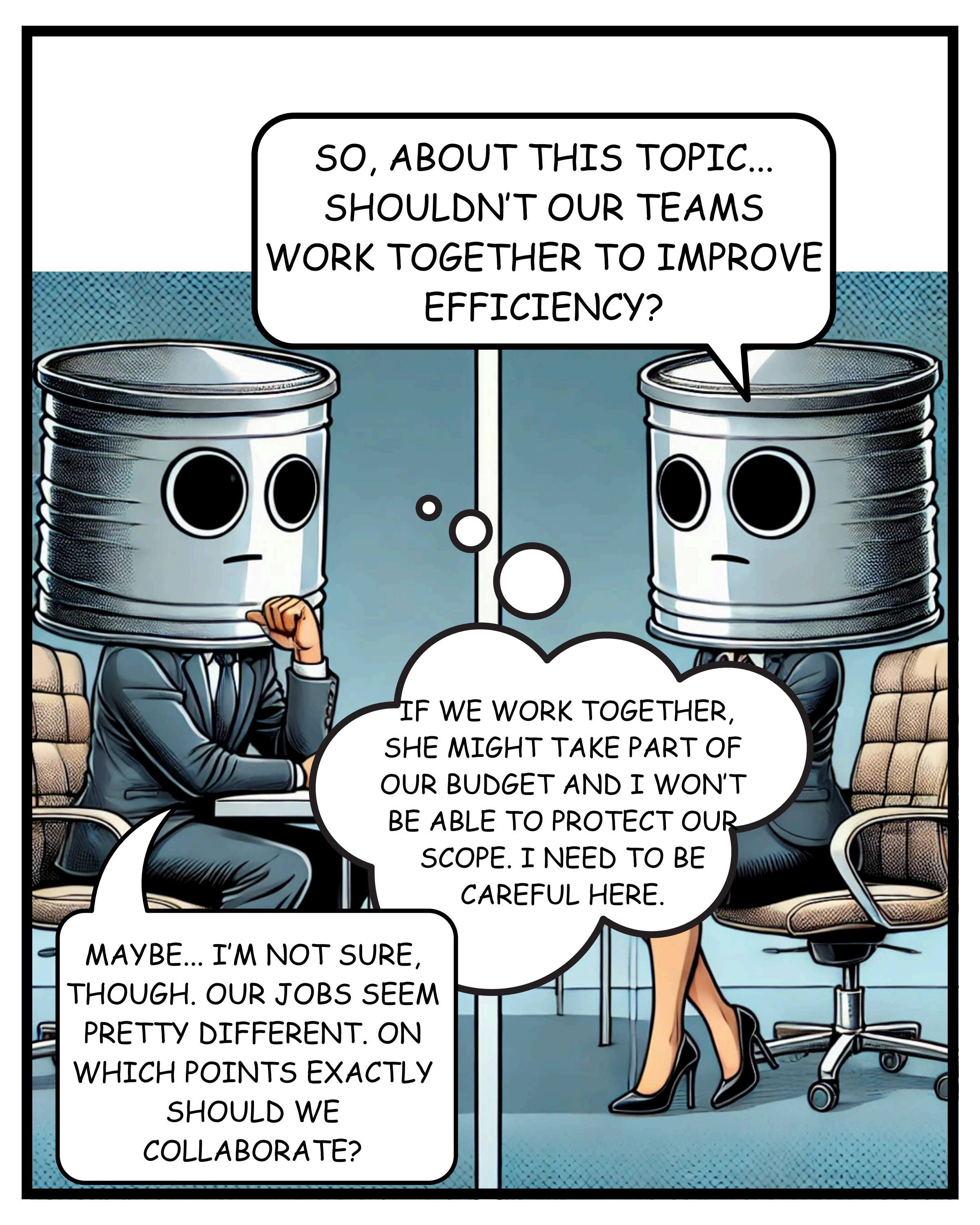


ADVENTURES of the *silos*-people S1 - Ep 9



DURING A MEETING ABOUT A NEW INITIATIVE, BETWEEN TWO DEPARTMENT REPRESENTATIVES WHO RARELY WORK TOGETHER...





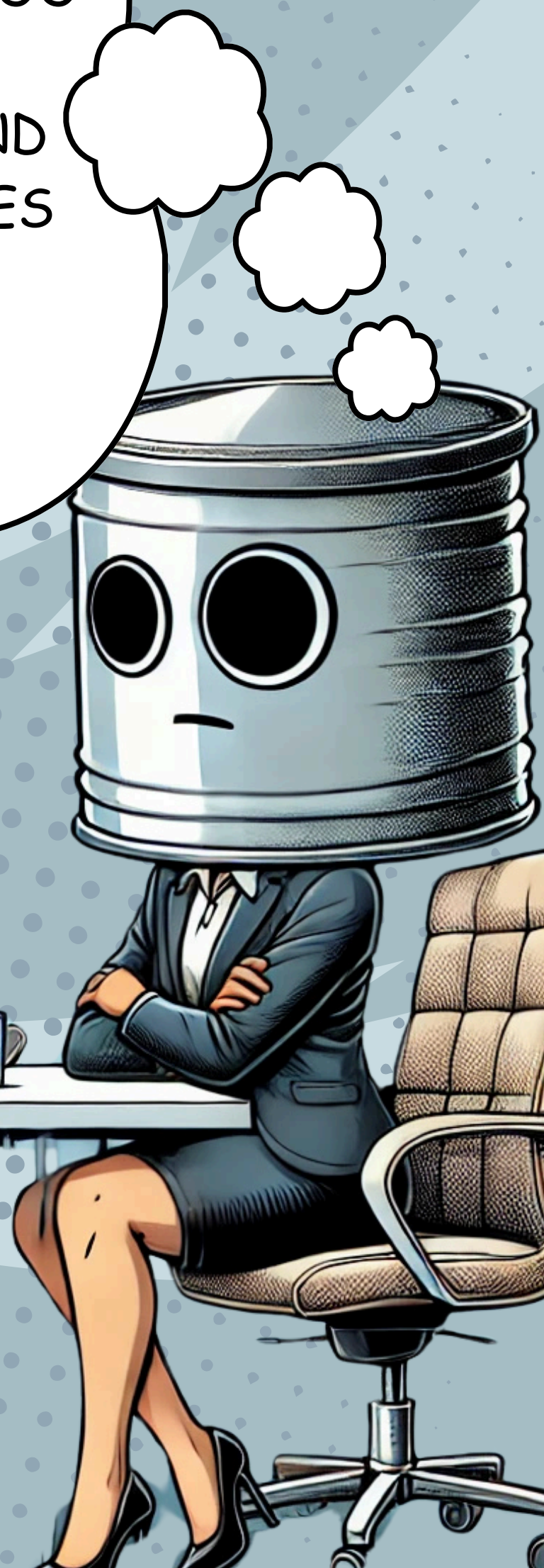
SO, ABOUT THIS TOPIC...
SHOULDN'T OUR TEAMS
WORK TOGETHER TO IMPROVE
EFFICIENCY?


IF WE WORK TOGETHER,
SHE MIGHT TAKE PART OF
OUR BUDGET AND I WON'T
BE ABLE TO PROTECT OUR
SCOPE. I NEED TO BE
CAREFUL HERE.

MAYBE... I'M NOT SURE,
THOUGH. OUR JOBS SEEM
PRETTY DIFFERENT. ON
WHICH POINTS EXACTLY
SHOULD WE
COLLABORATE?


IF I MENTION THINGS THAT ARE TOO IMPORTANT, I MIGHT END UP ABSORBING THEIR WORKLOAD, AND WE'LL HAVE TO USE OUR RESOURCES TO BOOST THEIR RESULTS...)

WELL, THERE'S PROBABLY A MINOR POINT WE COULD SET UP A FEW MEETINGS ABOUT. SOMETHING SMALL TO GET THINGS MOVING.




A man with a large, cylindrical metal can for a head is sitting in an office chair at a desk. He is wearing a dark suit, a white shirt, and a tie. He has a neutral expression. His right hand is resting on his chin, and his left hand is on the desk near a coffee mug. The background is a light blue wall with a pattern of small, dark blue dots.

GREAT, IF IT'S SOMETHING MINOR, I CAN STILL PROTECT OUR BUDGET AND GROW MY TEAM. PERFECT OPPORTUNITY.

A man with a large, cylindrical metal can for a head is sitting in an office chair at a desk. He is wearing a dark suit, a white shirt, and a tie. He has a neutral expression. His right hand is resting on his chin, and his left hand is on the desk near a coffee mug. The background is a light blue wall with a pattern of small, dark blue dots.

THAT SOUNDS REASONABLE. I THINK WE CAN AGREE TO A FEW MEETINGS TO EXPLORE THAT MINOR ASPECT.

A man with a large, cylindrical metal can for a head is sitting in an office chair at a desk. He is wearing a dark suit, a white shirt, and a tie. He has a neutral expression. His right hand is resting on his chin, and his left hand is on the desk near a coffee mug. The background is a light blue wall with a pattern of small, dark blue dots.

PERFECT, THIS GIVES ME A CHANCE TO GROW MY SCOPE WITHOUT COMMITTING TOO MUCH. A FEW MEETINGS, THEN MY TEAM CAN EXPAND FROM THERE.

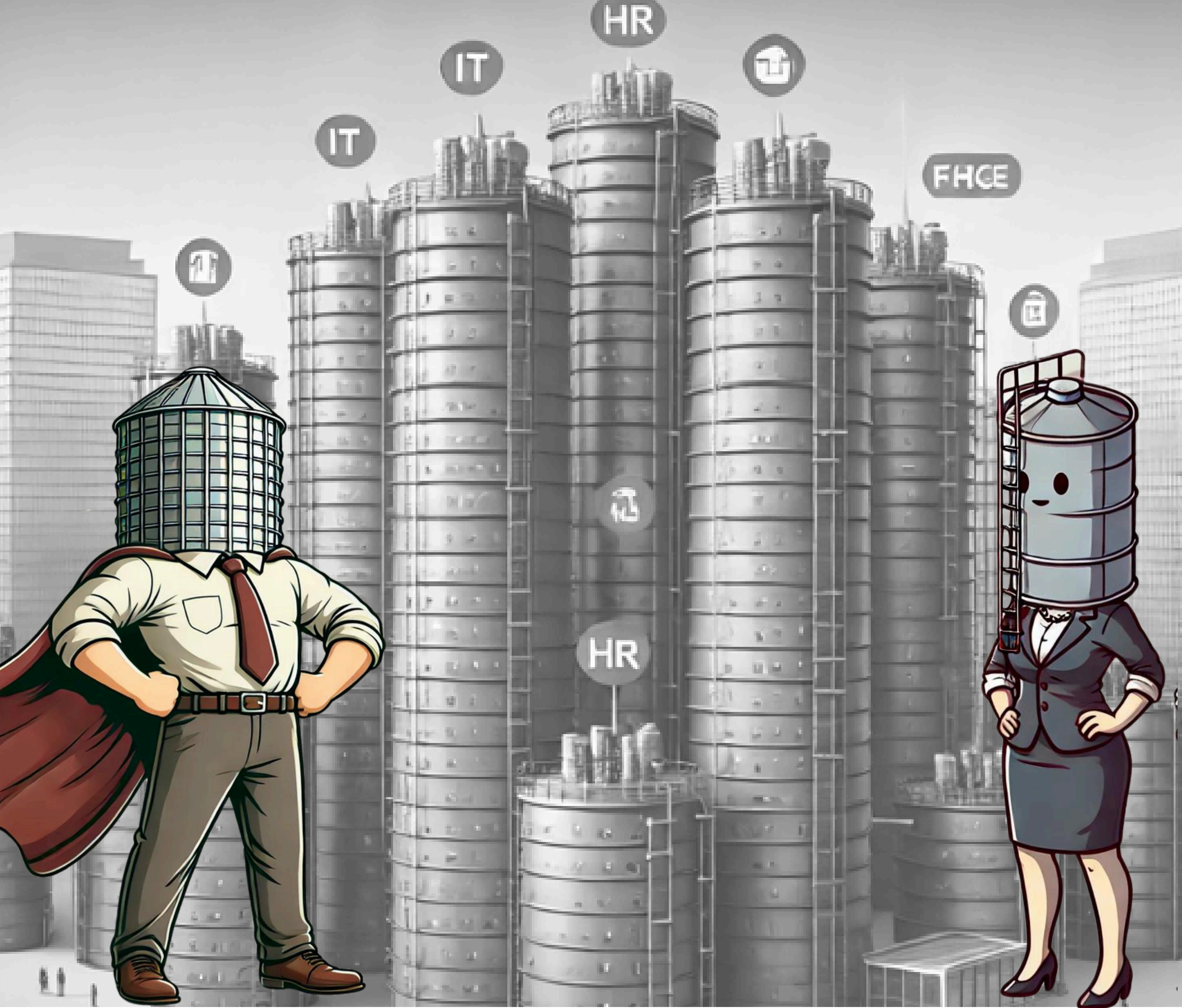
A woman with a large, cylindrical metal can for a head is sitting in an office chair at a desk. She is wearing a dark suit, a white shirt, and a tie. She has her arms crossed and a neutral expression. A coffee mug is on the desk in front of her. The background is a light blue wall with a pattern of small, dark blue dots.

ALRIGHT, LET'S GET A PLAN IN PLACE.

SOUNDS GREAT, NOW IT'S TIME TO GROW MY
TEAM AND SCOPE.

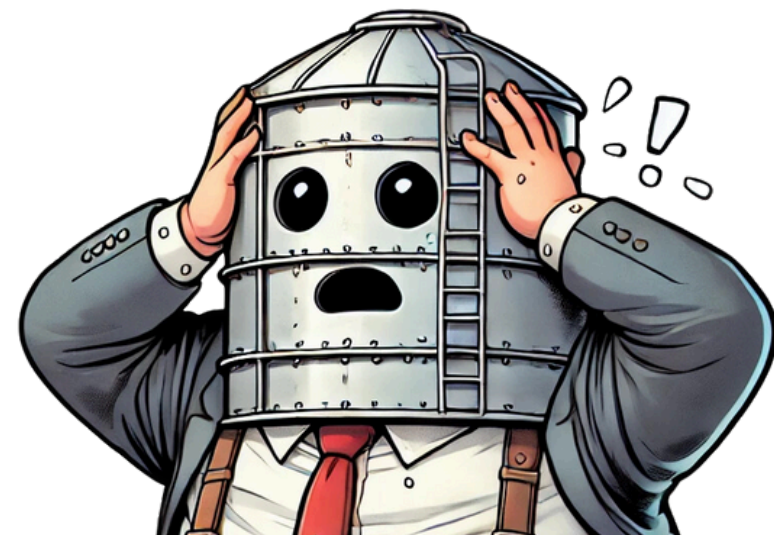
OUR TEAM IS
HAPPY TO WORK
WITH YOURS.





ADVENTURES of the *silo-people*

*Tales of the silo-mentality
in the workplace*



A webcomic by  Komyu