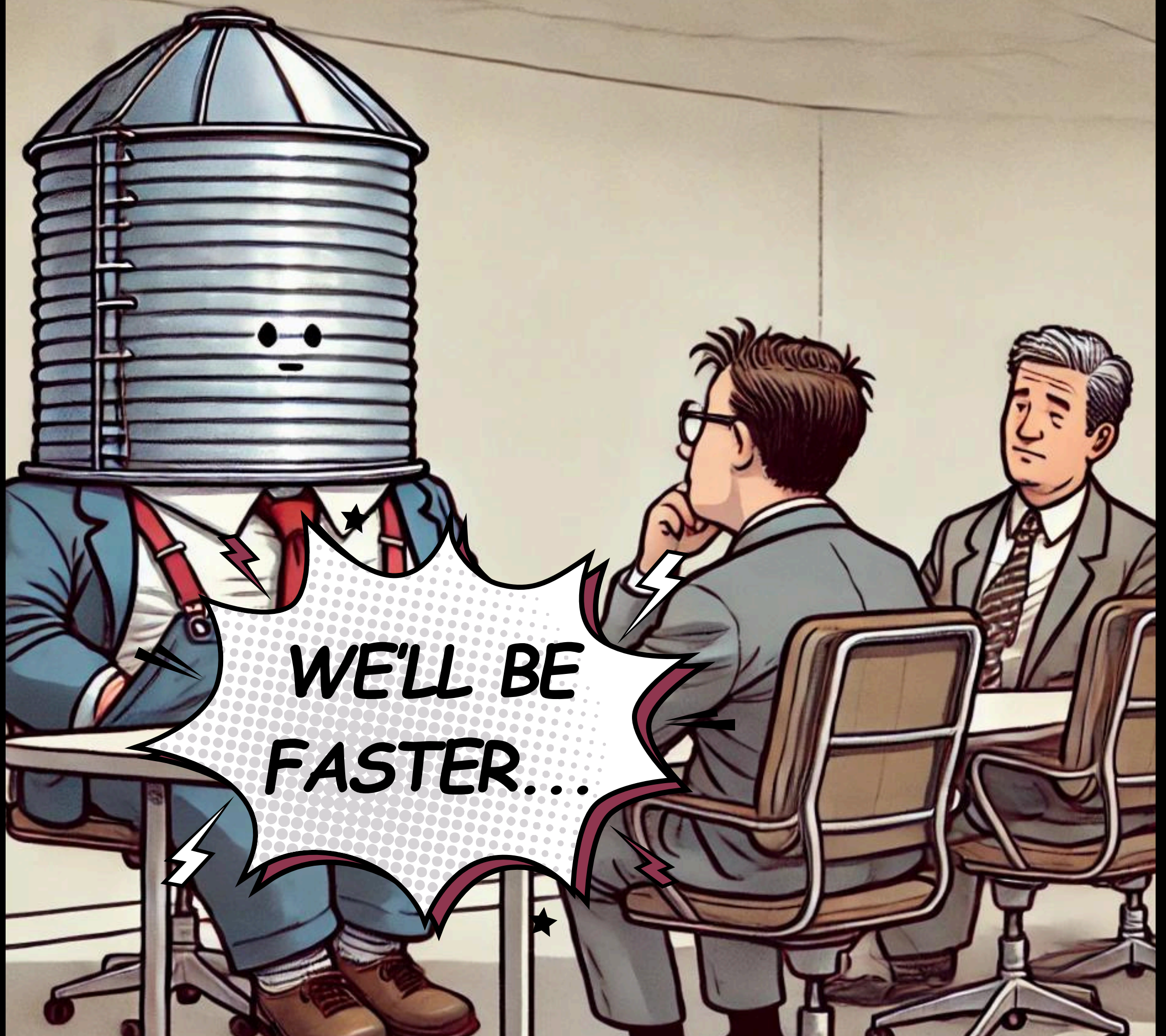
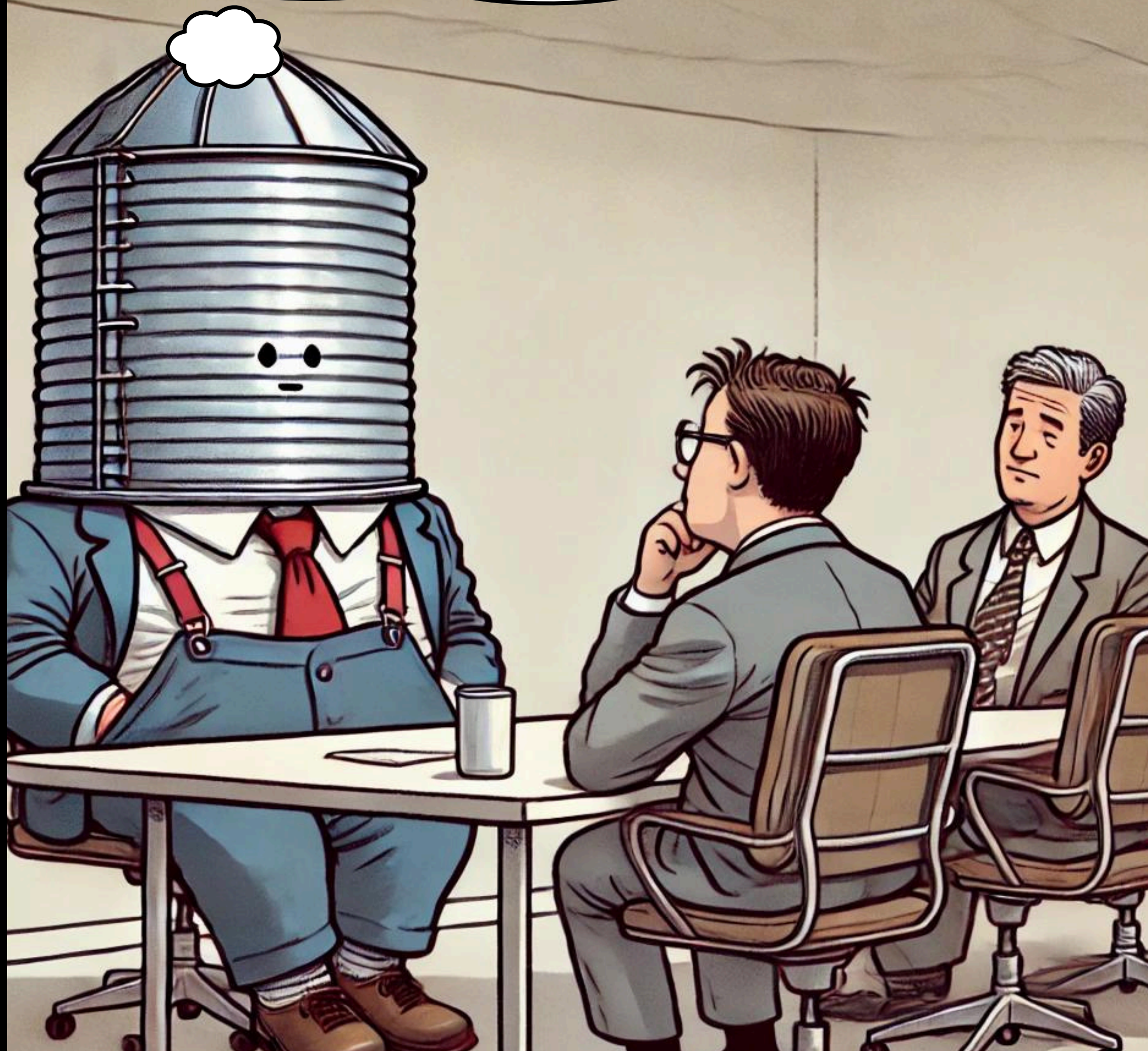


ADVENTURES of
the *silos*-people *S1 - Ep 5*



THESE DISCUSSIONS
ARE SO SLOW

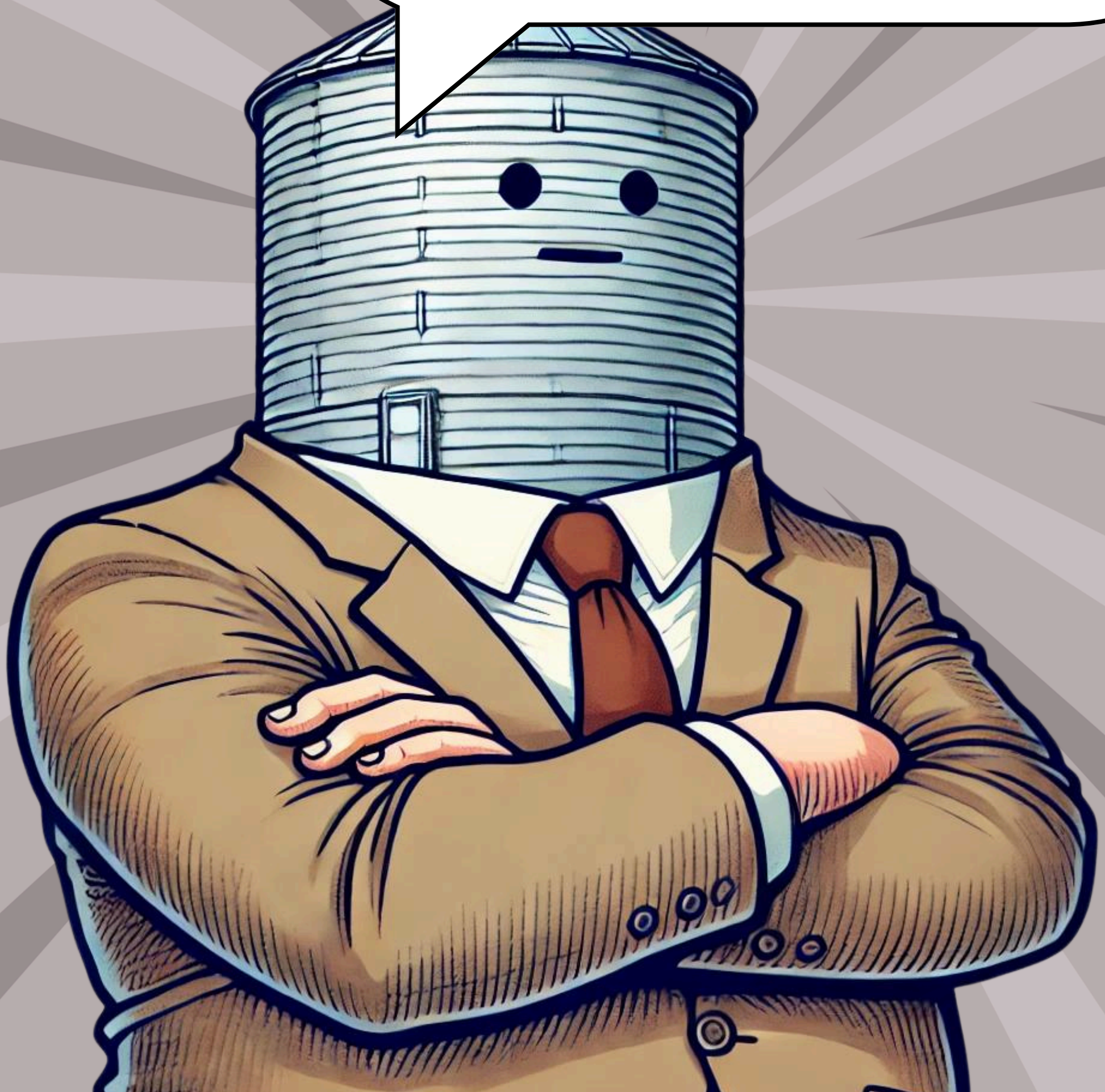


YOU WANT TO LAUNCH A NEW
PRODUCT, SHOULDN'T WE GET
SOMEONE FROM SALES
DEPARTMENT?

OR AT LEAST FROM
MARKETING?



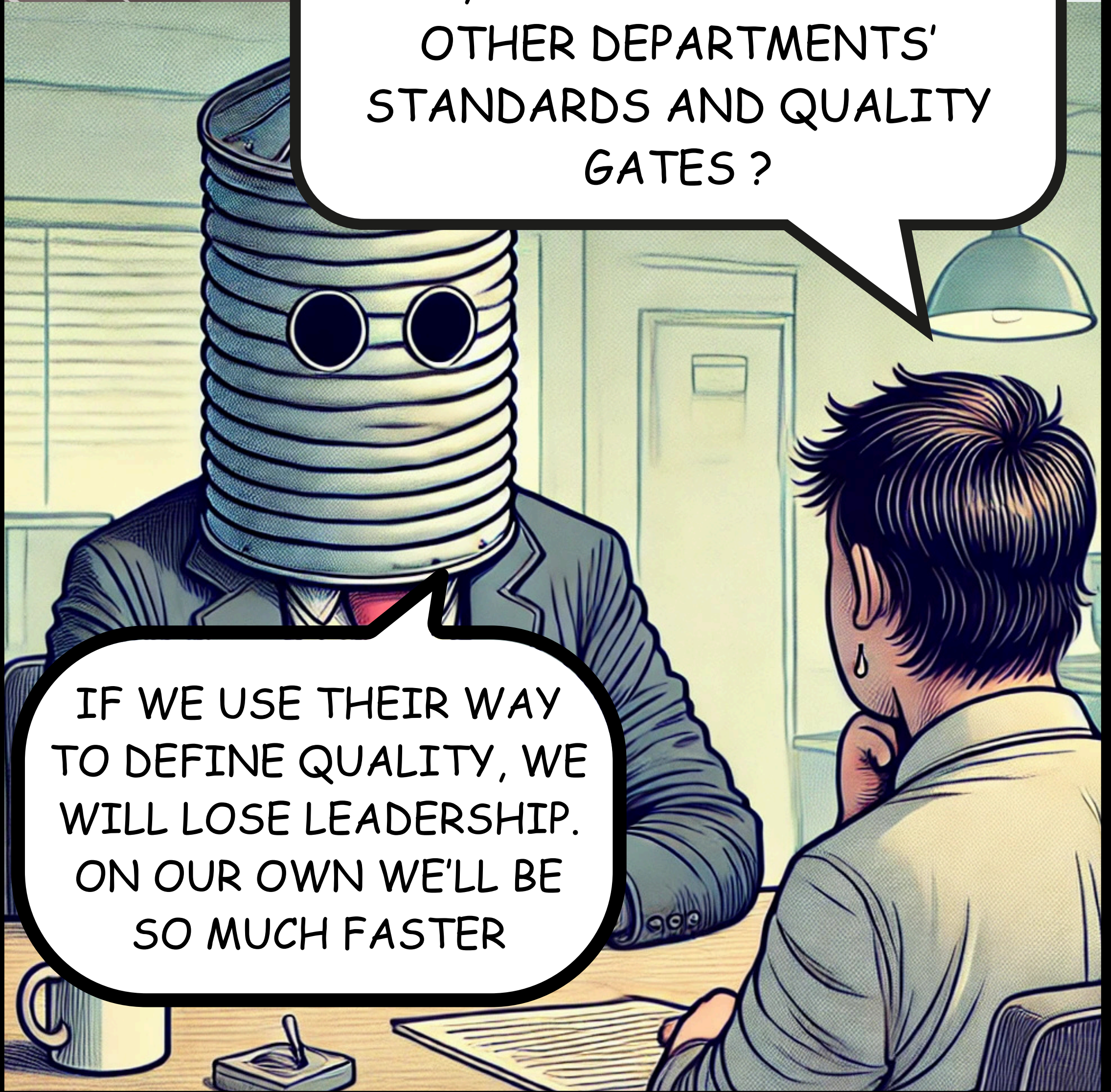
IF WE INVOLVE TOO MANY
PEOPLE,
IT WILL COMPLICATE THINGS.
ON OUR OWN WE'LL BE SO
MUCH FASTER



A few weeks later...

BOSS, SHOULD WE CONSIDER
OTHER DEPARTMENTS'
STANDARDS AND QUALITY
GATES ?

IF WE USE THEIR WAY
TO DEFINE QUALITY, WE
WILL LOSE LEADERSHIP.
ON OUR OWN WE'LL BE
SO MUCH FASTER



A few weeks later...

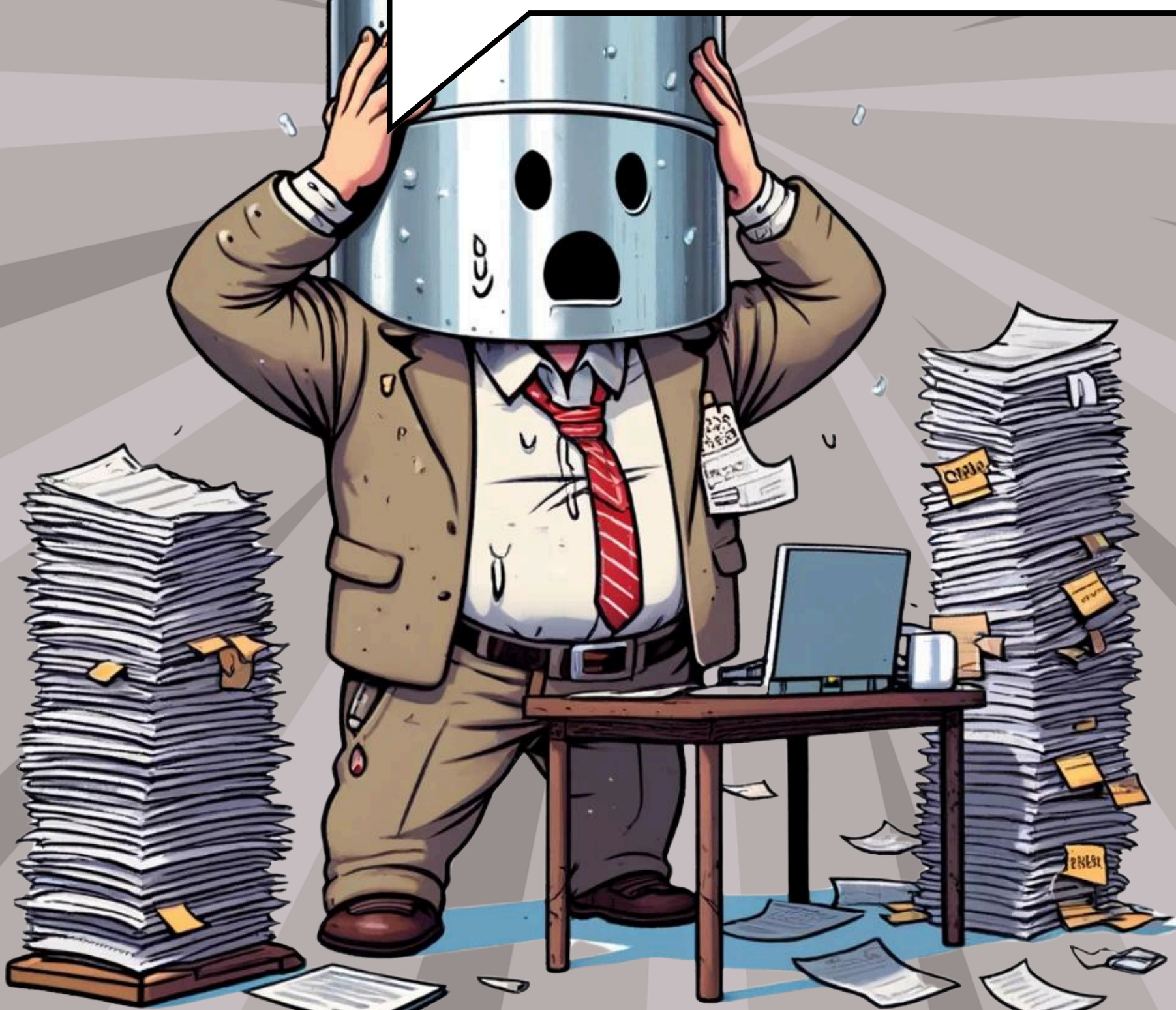
BOSS, -

**COME ON, WHAT DO THEY
WANT NOW?! WE WERE
SUPPOSED TO GO SO MUCH
FASTER?!**



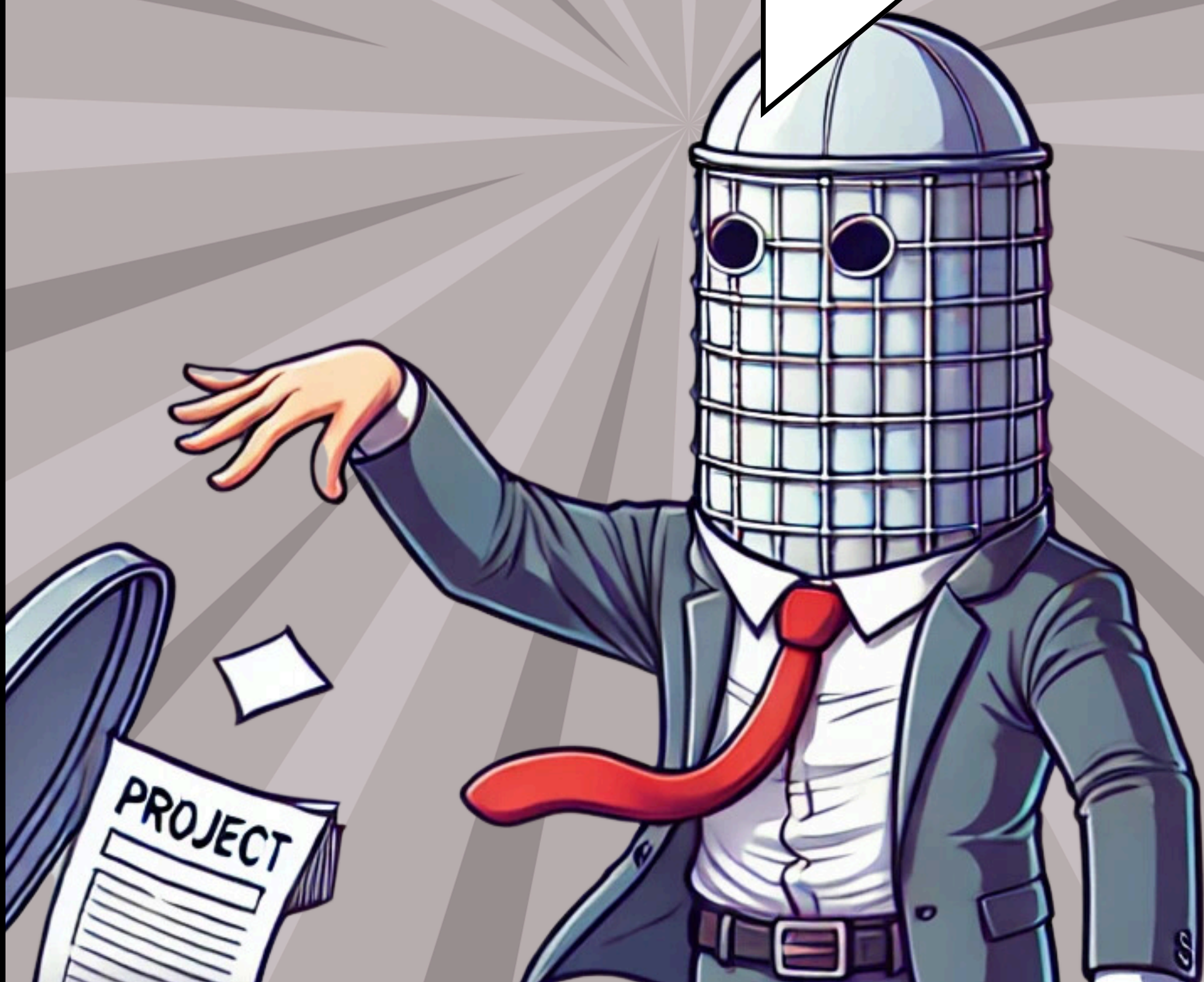
A few months later...

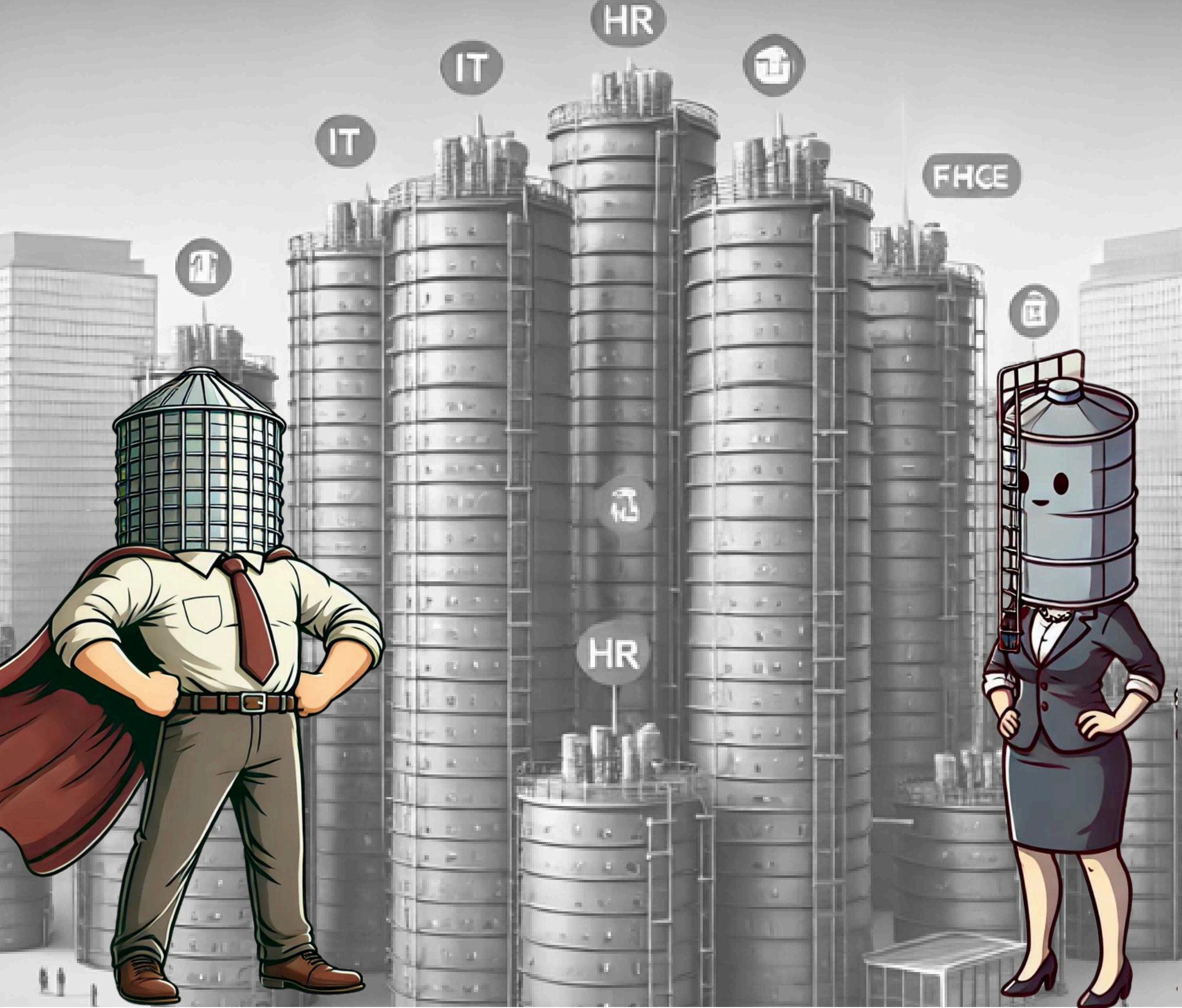
STILL GOING BACK AND FORTH
WITH ALL PEOPLE WHO NOW
"WANT IN", DEADLINES ARE
APPROACHING,
ON OUR OWN WE WOULD BE SO
MUCH FASTER



A few months later...

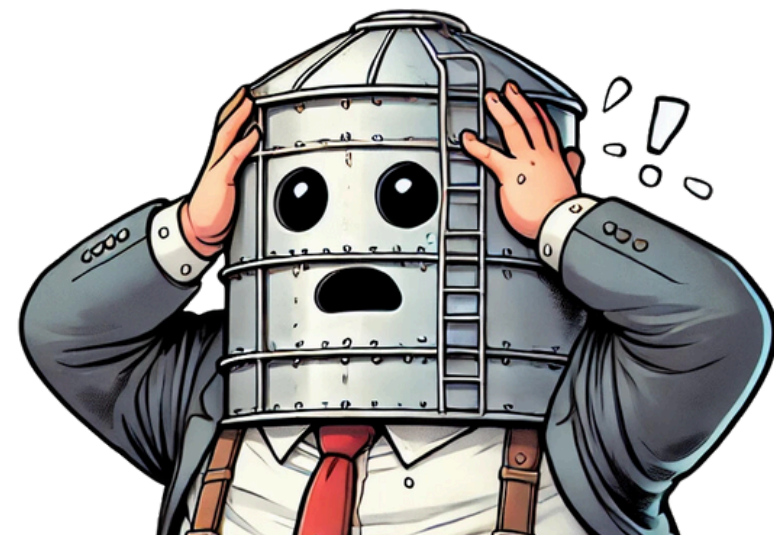
AT LEAST, ON OUR
OWN,
WE FAILED SO
MUCH FASTER!





ADVENTURES of the *silo-people*

*Tales of the silo-mentality
in the workplace*



A webcomic by  **KOMYU**