
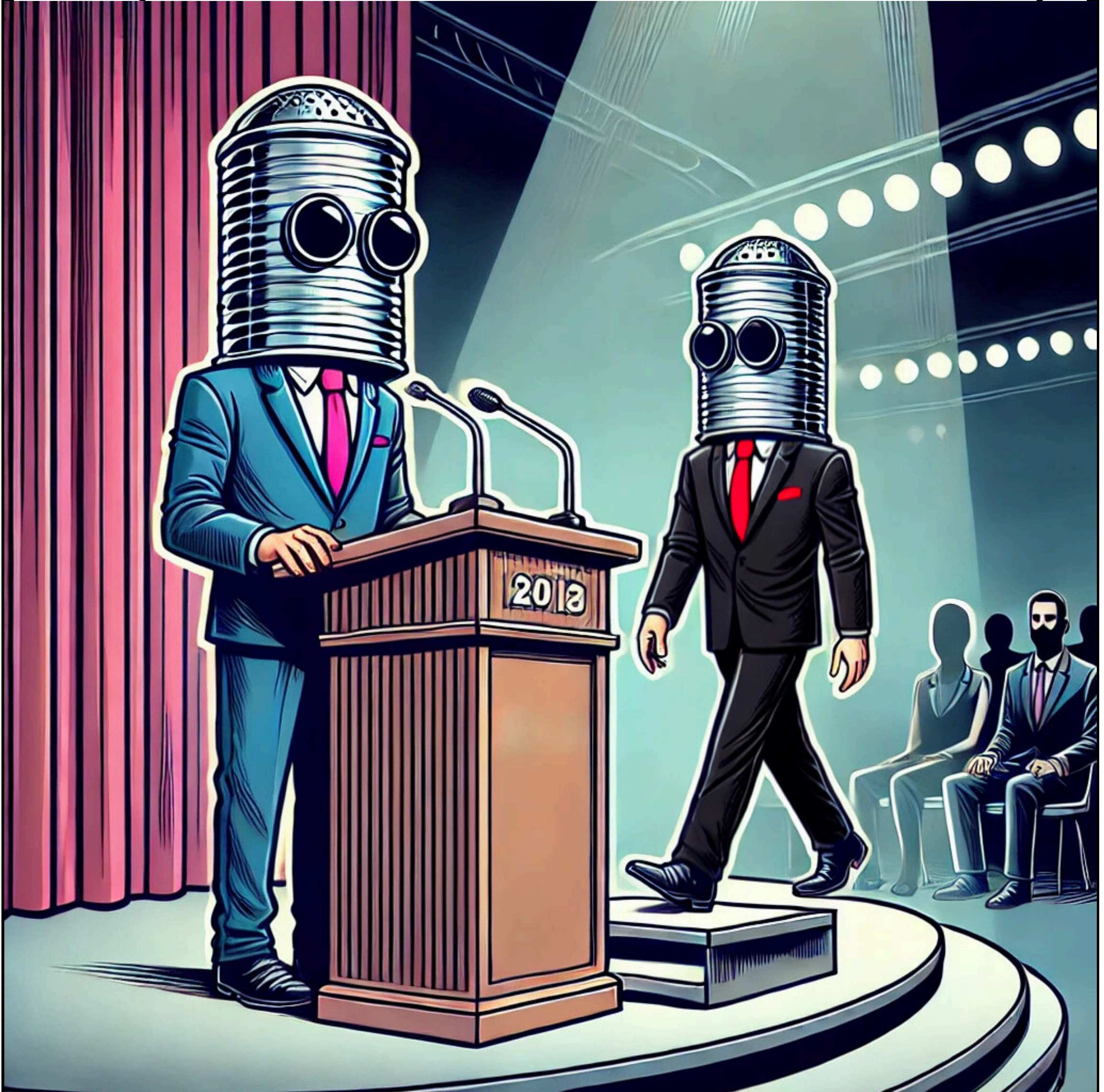


**ADVENTURES of
the *Silo-People* S1 - Ep 12**

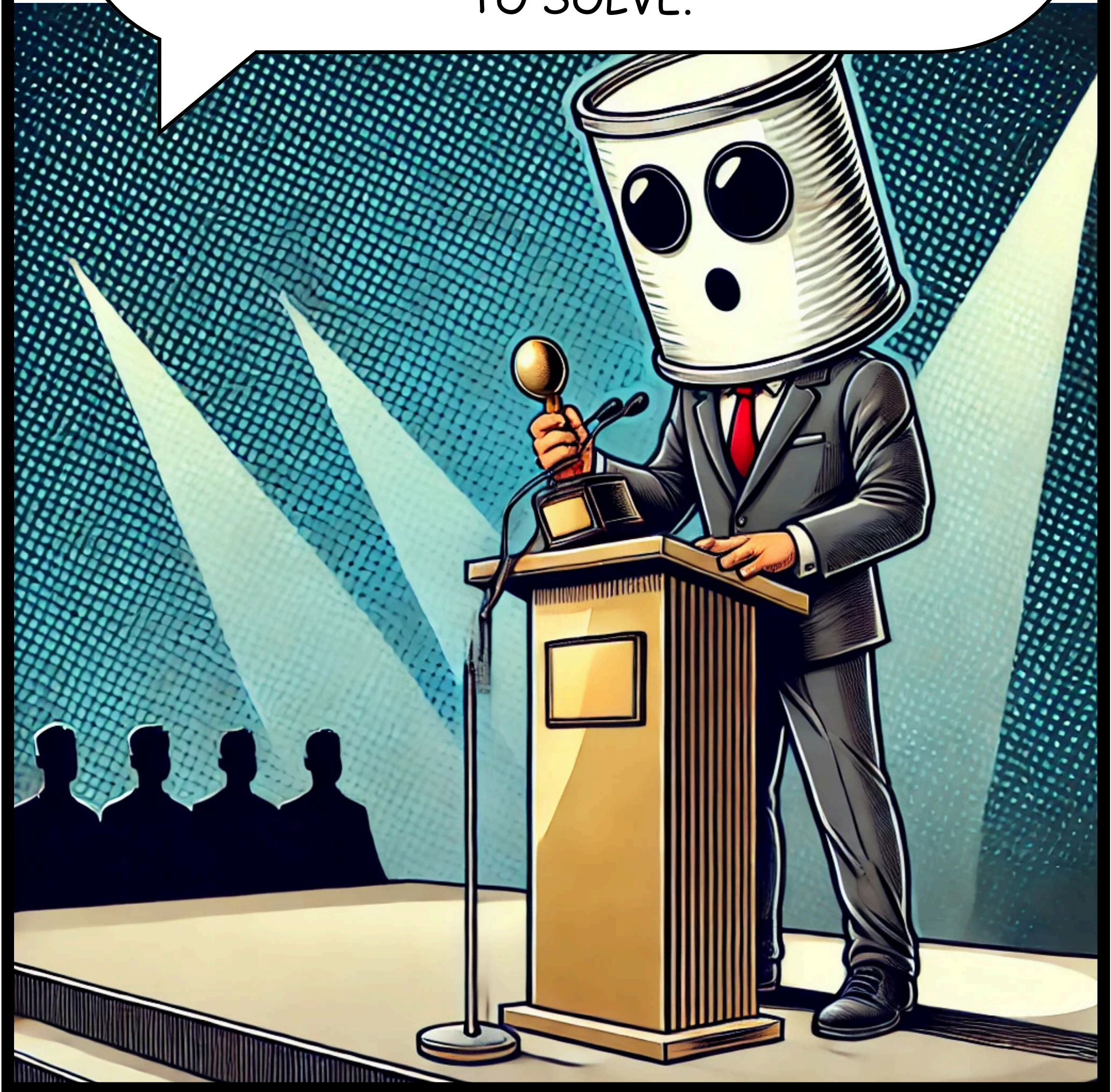



**CREDITS GO
TO THE SELF-
MADE TEAM**

AND NOW, REPRESENTING THE TEAM WHO DEVELOPED THE MOST SUCCESSFUL DEPARTMENT OF THE YEAR IN THE COMPANY THEIR MANAGER...



DEAR ALL, THANKS A LOT FOR THIS AWARD.
THIS YEAR HAS BEEN DIFFICULT AND FULL
OF CHALLENGES, SURPRISES, AND PROBLEMS
TO SOLVE.

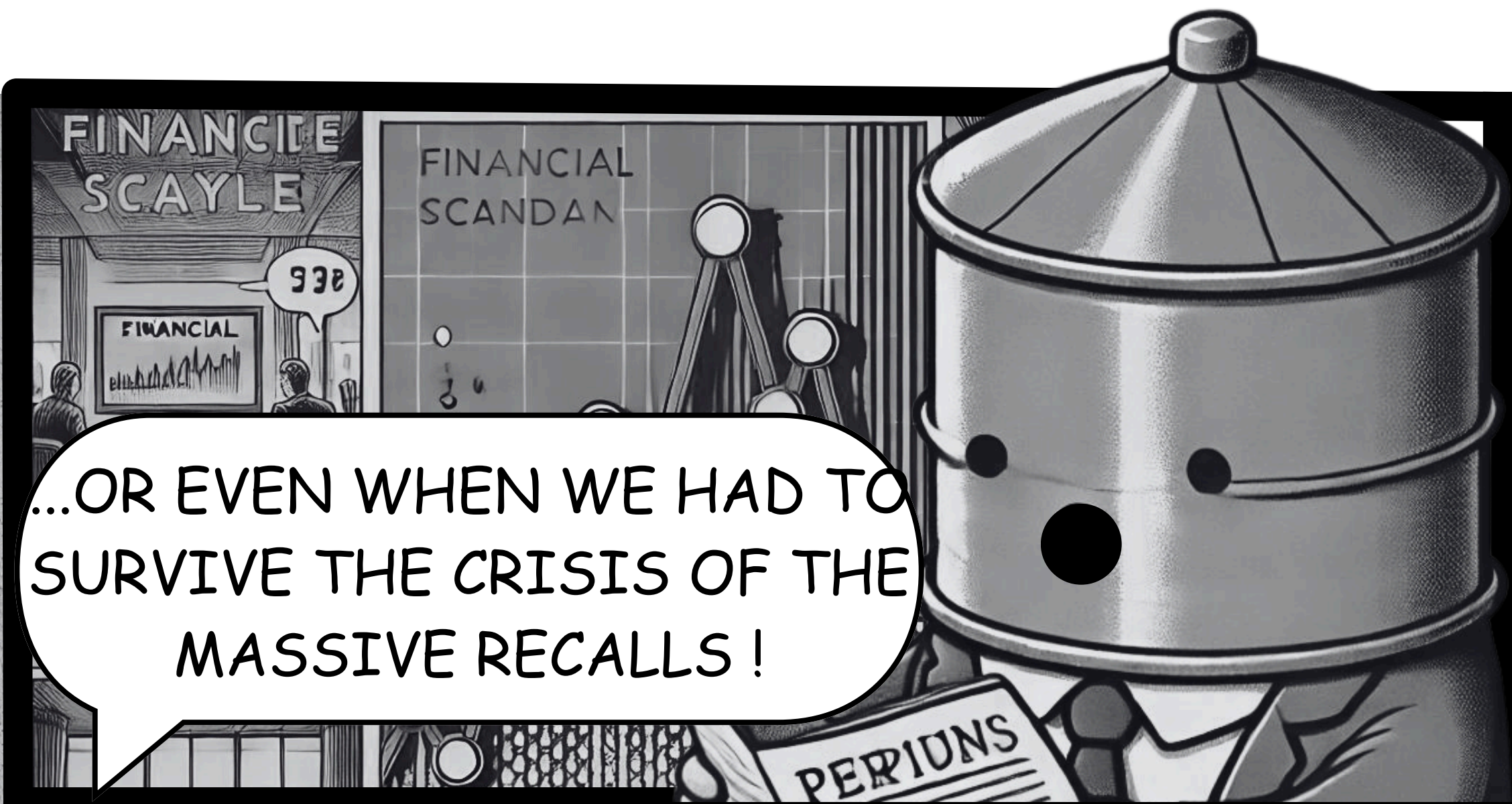




I REMEMBER WHEN WE HAD TO HIRE
AND TRAIN A NEW JUNIOR MEMBER...



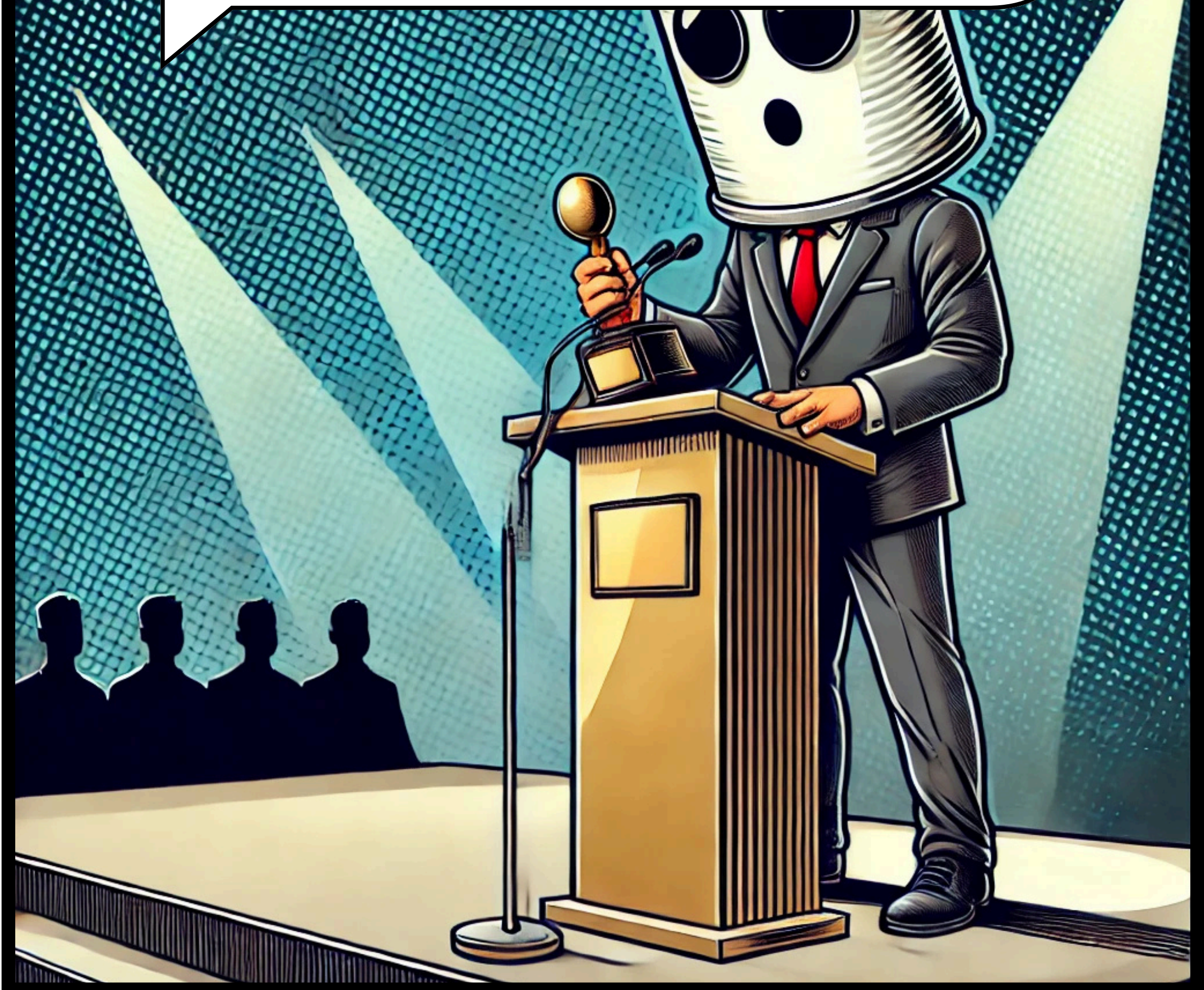
...WHEN WE HAD TO CONNECT OUR
PLATFORM TO THE DATA-LAKE...



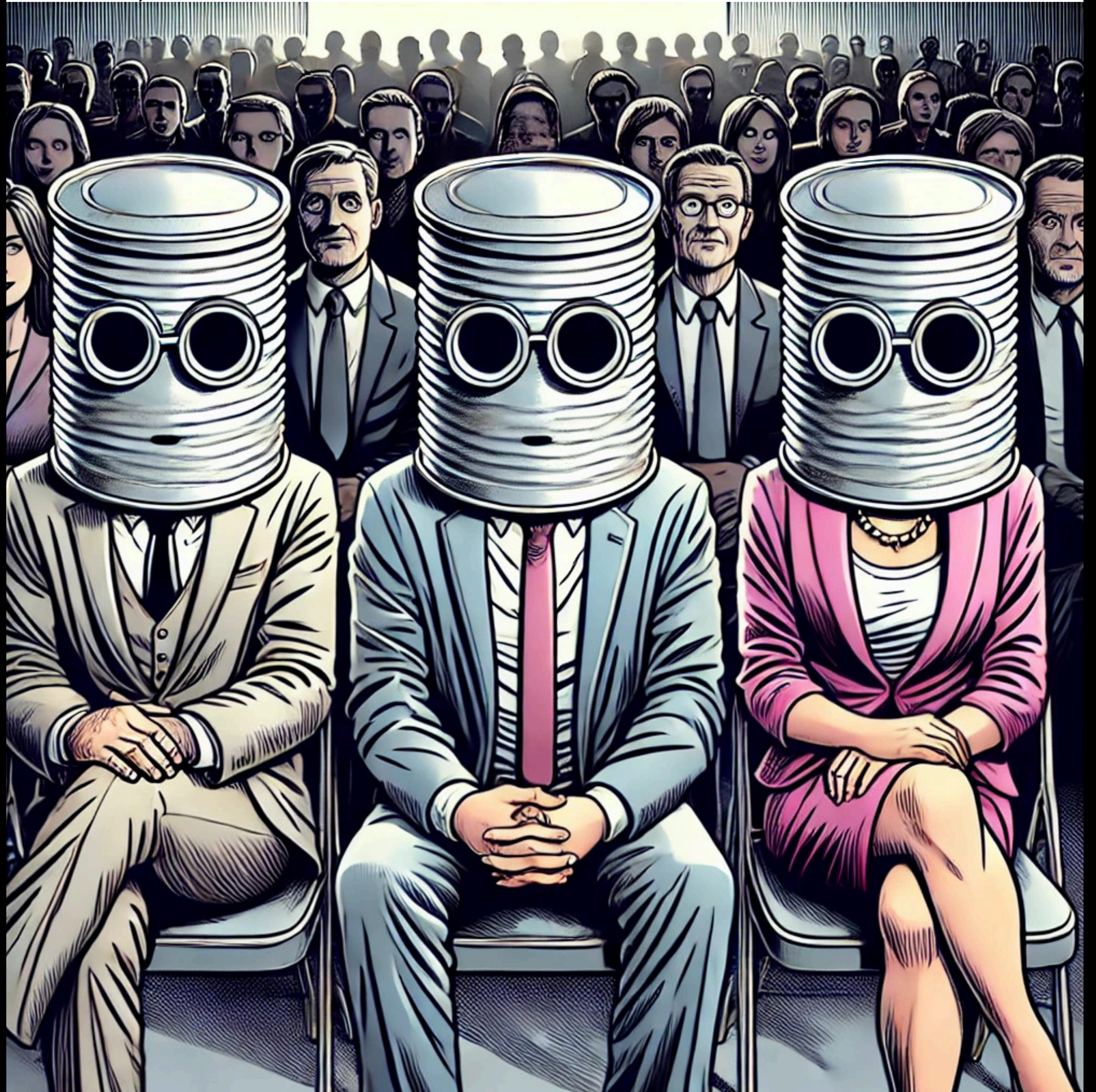
...OR EVEN WHEN WE HAD TO
SURVIVE THE CRISIS OF THE
MASSIVE RECALLS!

THERE ARE MANY THINGS WE SOLVED,
AND MANY THINGS I AM PROUD OF.

MOST OF ALL, I AM REALLY HAPPY THAT
WE DID ALL OF THIS BY OURSELVES,
AND I AM VERY THANKFUL TO ...

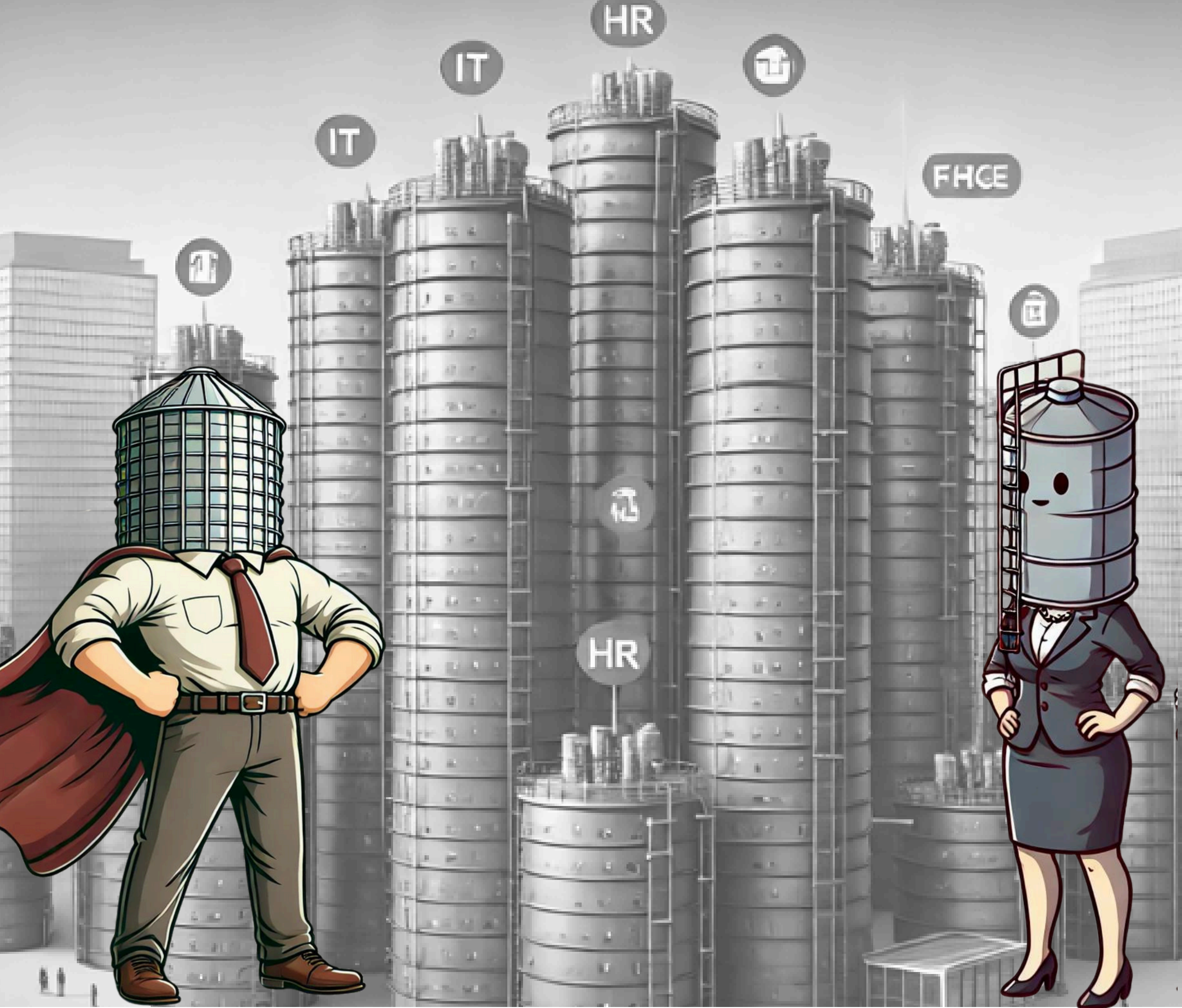


..., WHAT DO I SAY: UTTERLY
THANKFUL TO ...



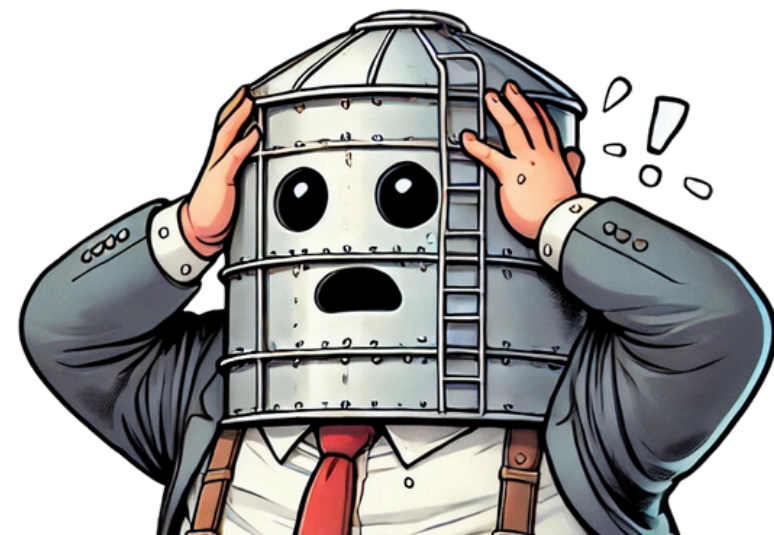
...OUR MINDSET OF
SELF-MADE TEAM





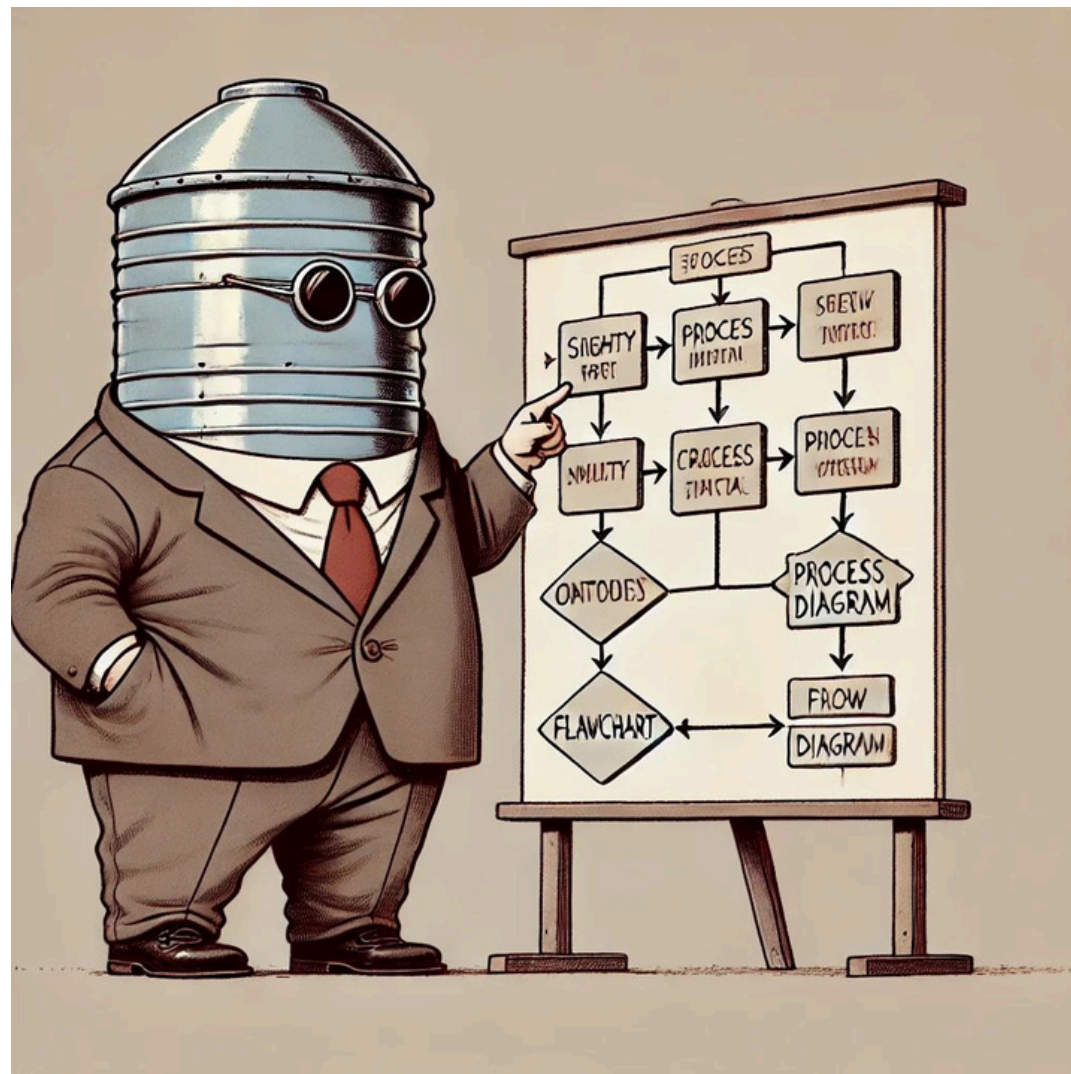
ADVENTURES of the *silo-people*

*Tales of the silo-mentality
in the workplace*



A webcomic by  **KOMYU**

Coming next :



*A new season ?
We were wondering
about introducing a
new season with more
nuance and subtlety*

**Thanks a million for following
us throughout the season and
through the silos !**

